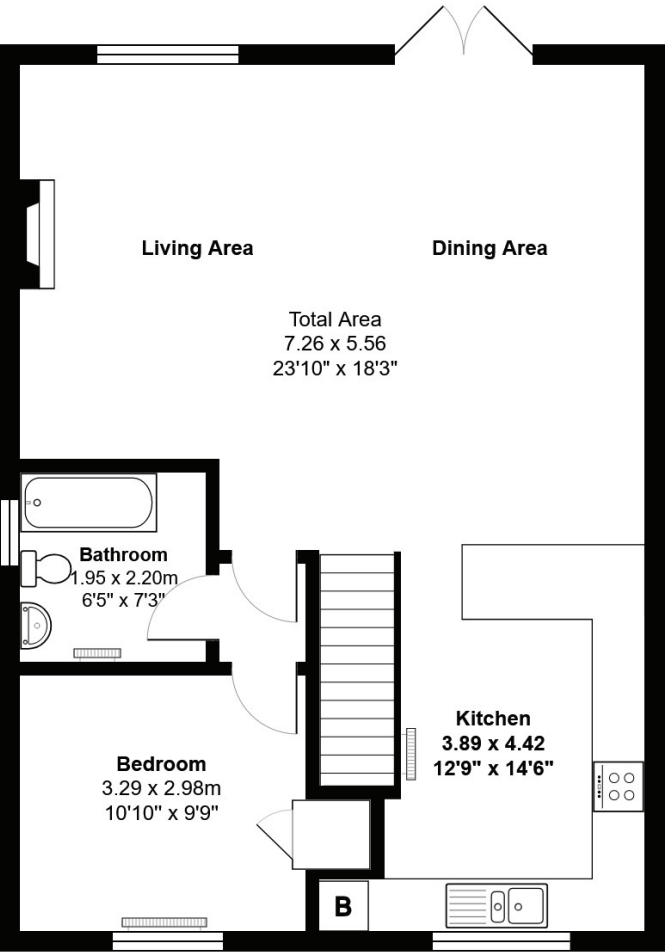
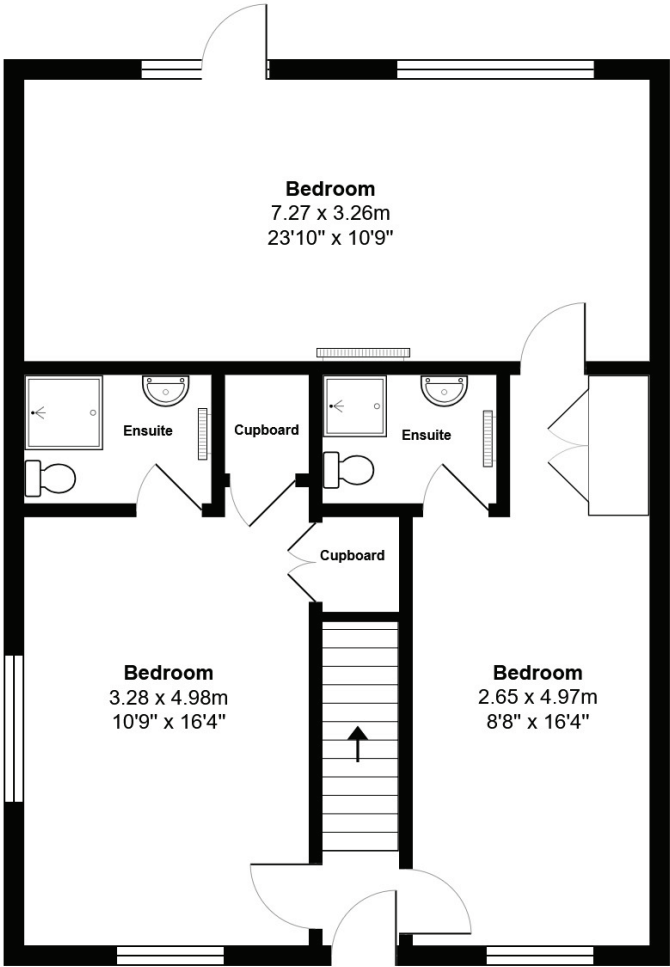


TREVELLS, ROSERROW/THE POINT, ST MINVER, WADEBRIDGE, CORNWALL PL27 6QT

ID-217
TOTAL AREA: 146.4 m² 1575 ft²
All measurements are approximate and for display purposes only.



FIRST FLOOR



GROUND FLOOR

EPC ENERGY RATING

Score	Energy rating	Current	Potential
92+	A		
81-91	B		
69-80	C		
55-68	D		66 D
39-54	E	53 E	
21-38	F		
1-20	G		