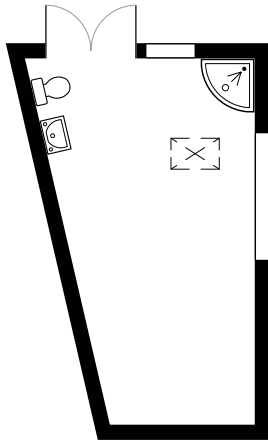


# BAY VIEW HOUSE & RETAIL UNITS, 44 FORE STREET, PORT ISAAC, PL29 3RD

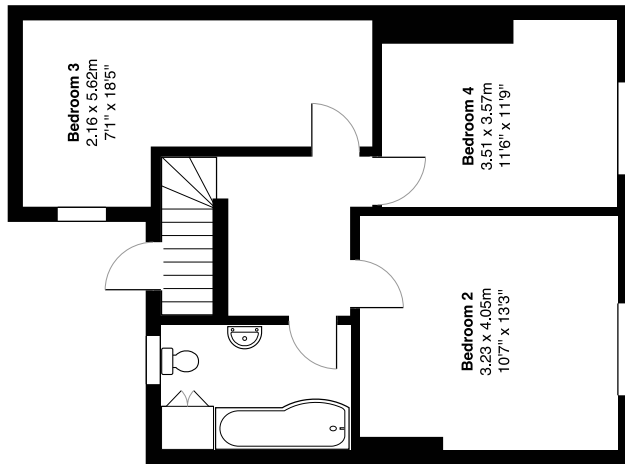
ID-206

TOTAL AREA: 197.2 m<sup>2</sup> 2123 ft<sup>2</sup>.

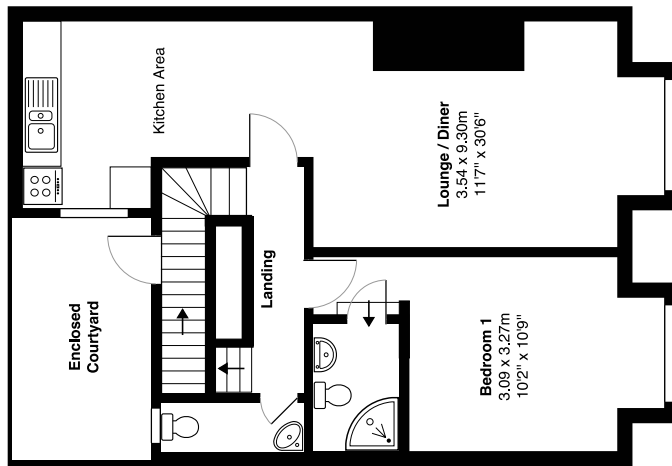
All measurements are approximate and for display purposes only.



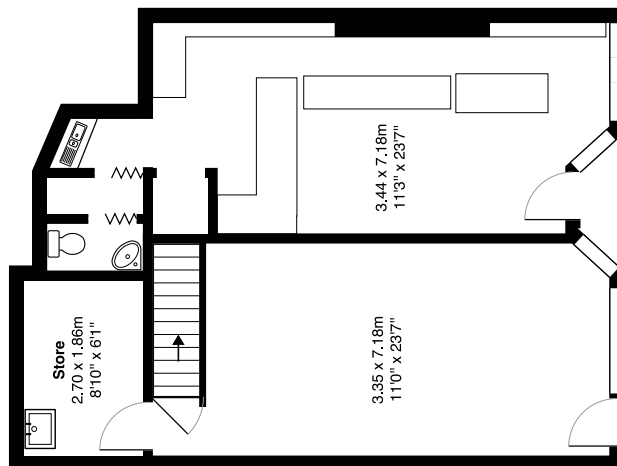
Garden Room



Second Floor



First Floor



Ground Floor

## EPC ENERGY RATING

| Score | Energy rating | Current | Potential |
|-------|---------------|---------|-----------|
| 92+   | A             |         |           |
| 81-91 | B             |         |           |
| 69-80 | C             |         |           |
| 55-68 | D             |         | 58   D    |
| 39-54 | E             |         |           |
| 21-38 | F             |         |           |
| 1-20  | G             | 8   G   |           |



**ESTUARY**  
ESTATES

| ROSINA SHEPHERD NAEA |

MORE DETAILED PROPERTY PARTICULARS  
WWW.ESTUARYESTATES.CO.UK