

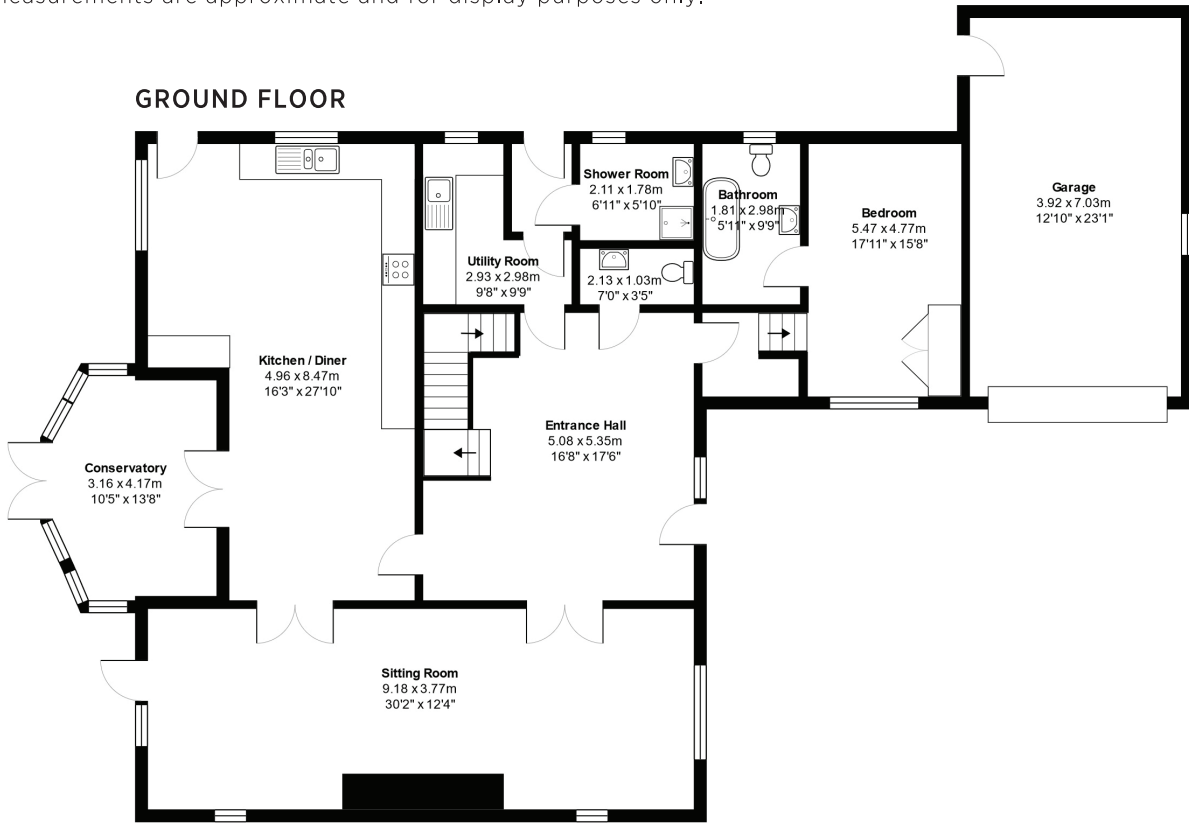
THE SUMMERHOUSE, ROSERROW/THE POINT, ST MINVER, WADEBRIDGE, CORNWALL PL27 6QT

ID-201

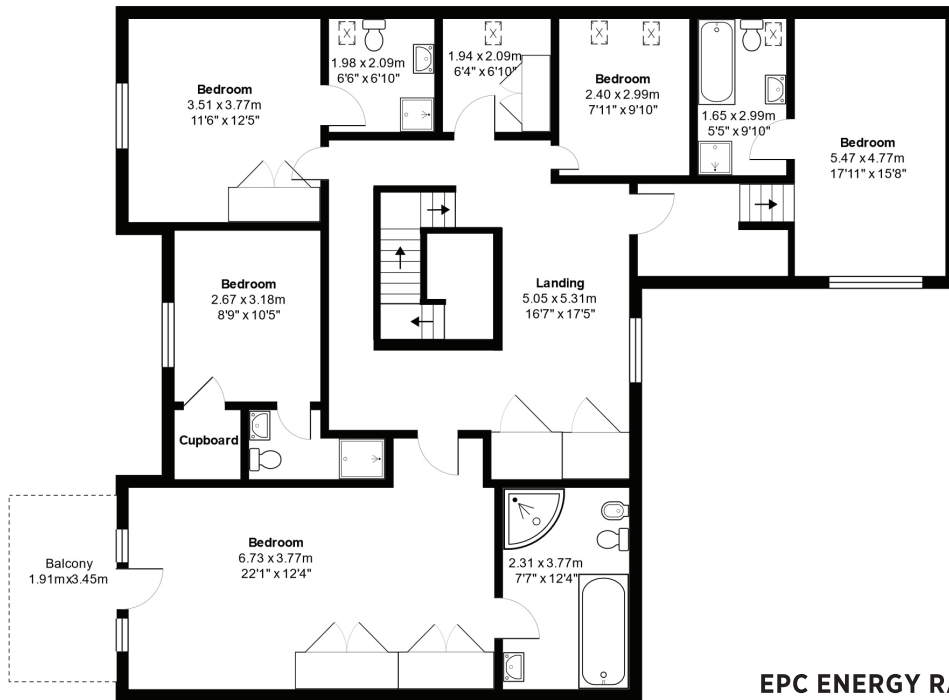
TOTAL AREA: 305.9 m² 3293 ft²

All measurements are approximate and for display purposes only.

GROUND FLOOR



FIRST FLOOR



EPC ENERGY RATING

Score	Energy rating	Current	Potential
92+	A		
81-91	B		
69-80	C	70 C	75 C
55-68	D		
39-54	E		
21-38	F		
1-20	G		



ESTUARY
ESTATES

| ROSINA SHEPHERD NAEA |

MORE DETAILED PROPERTY PARTICULARS
WWW.ESTUARYESTATES.CO.UK