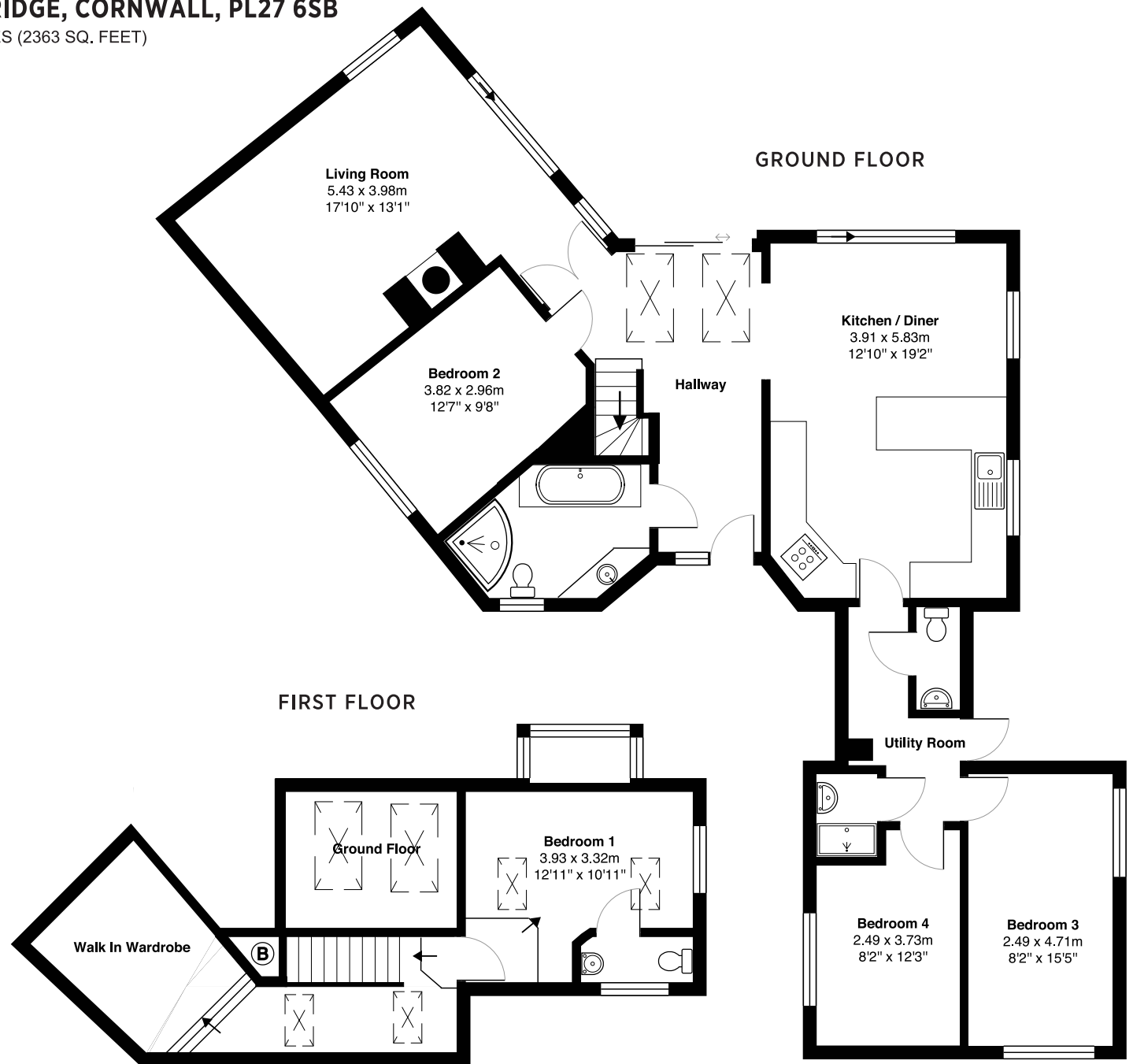


ARISH VEAN, TREBETHERICK, WADEBRIDGE, CORNWALL, PL27 6SB

ID-186 | APPROX. EXCLUDING GARAGE 219.5 SQ. METRES (2363 SQ. FEET)



ESTUARY ESTATES
| ROSINA SHEPHERD NAEA |
MORE DETAILED PROPERTY PARTICULARS
WWW.ESTUARYESTATES.CO.UK

TOTAL AREA: 219.5 m² 2363 ft²

All measurements are approximate and for display purposes only.

FLOORPLAN FOR GUIDANCE ONLY. NO LIABILITY ACCEPTED FOR ERRORS.