

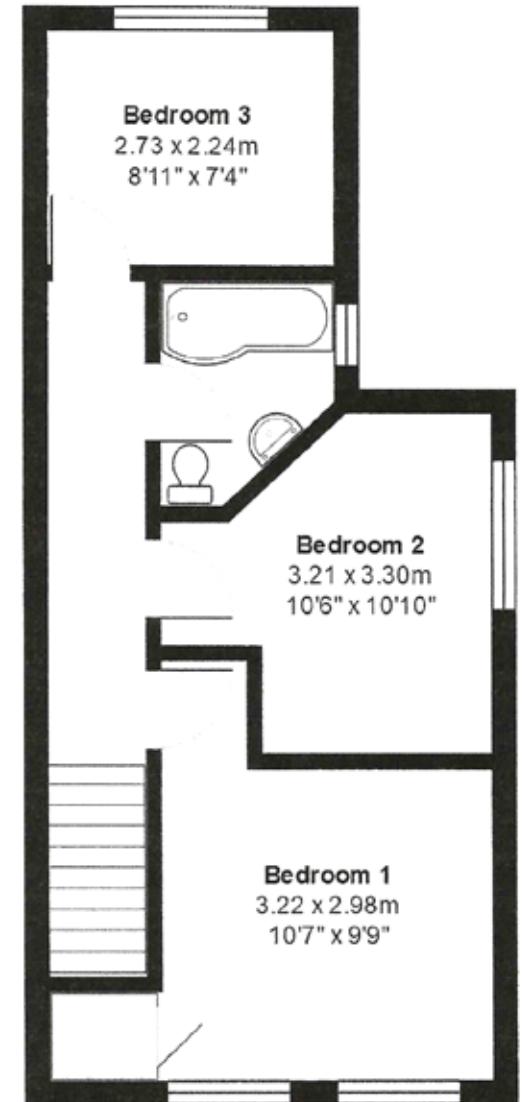
ATLANTIC VIEW, 5 CLIFFSIDE, FORE STREET, PORT ISAAC PL29 3RE

ID-176 | APPROX. 78.3 SQ. METRES (843 SQ. FEET)

GROUND FLOOR



FIRST FLOOR



TOTAL AREA: 78.3 m² 843 ft²

All measurements are approximate and for display purposes only.

FLOORPLAN FOR GUIDANCE ONLY. NO LIABILITY ACCEPTED FOR ERRORS.



ESTUARY
ESTATES

| ROSINA SHEPHERD NAEA |

MORE DETAILED PROPERTY PARTICULARS
WWW.ESTUARYESTATES.CO.UK