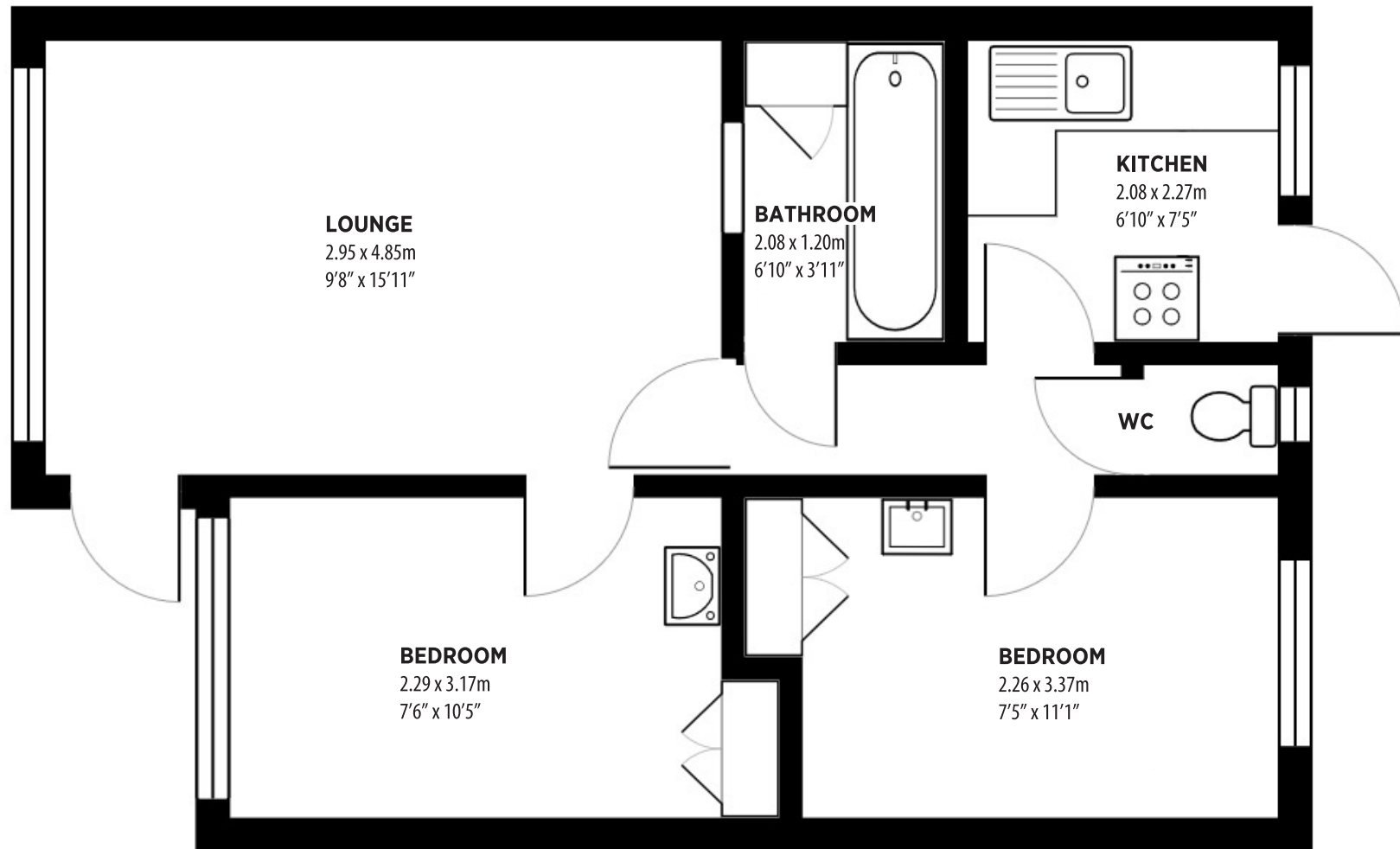


# NO 10 TIDES REACH, POLZEATH, WADEBRIDGE

ID-172 | APPROX. 40.4 SQ. METRES (435 SQ. FEET)



**ESTUARY**  
ESTATES

| ROSINA SHEPHERD NAEA |

MORE DETAILED PROPERTY PARTICULARS  
[WWW.ESTUARYESTATES.CO.UK](http://WWW.ESTUARYESTATES.CO.UK)

**TOTAL AREA:** 40.4 m<sup>2</sup> 435 ft<sup>2</sup>

All measurements are approximate and for display purposes only.

FLOORPLAN FOR GUIDANCE ONLY. NO LIABILITY ACCEPTED FOR ERRORS.