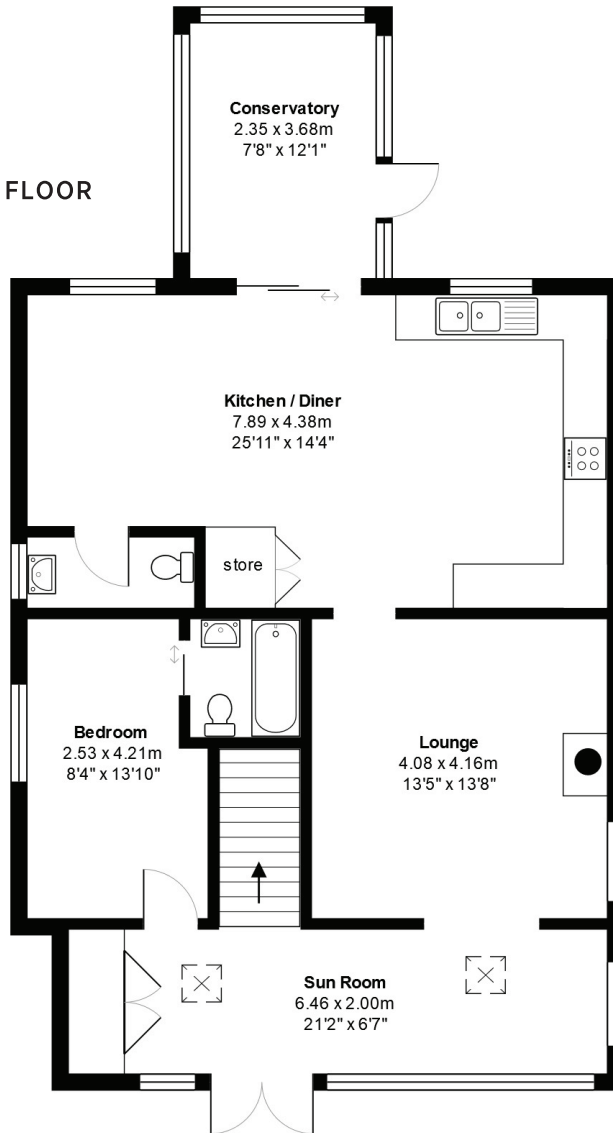


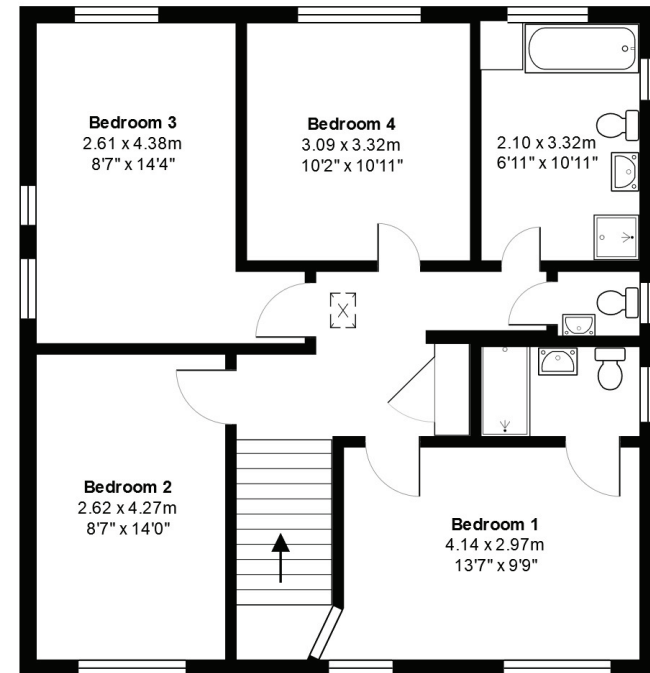
TRESEVENS, POLZEATH, WADEBRIDGE, CORNWALL PL27 6TL

ID-171 | APPROX. 156.7 SQ. METRES (1687 SQ. FEET)

GROUND FLOOR



FIRST FLOOR



TOTAL AREA: 156.7 m² 1687 ft²

All measurements are approximate and for display purposes only.

FLOORPLAN FOR GUIDANCE ONLY. NO LIABILITY ACCEPTED FOR ERRORS.



ESTUARY
ESTATES

| ROSINA SHEPHERD NAEA |

MORE DETAILED PROPERTY PARTICULARS
WWW.ESTUARYESTATES.CO.UK