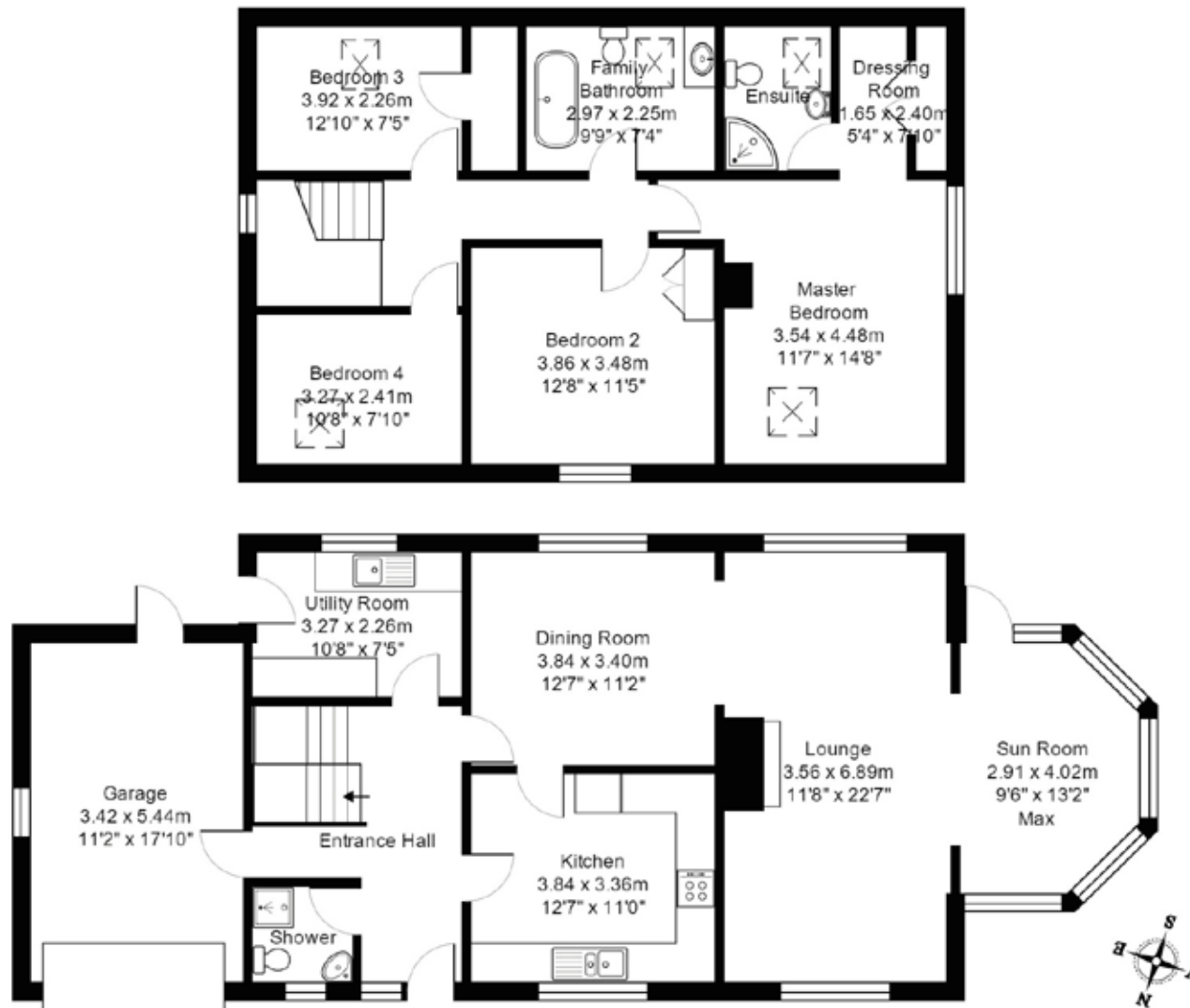


**GWELLA,
NO 12, ROSERROW, ST MINVER, WADEBRIDGE, CORNWALL PL27 6QT**

ID-129 | APPROX. 184.4 SQ. METRES (1985 SQ. FEET)



**ESTUARY
ESTATES**

| ROSINA SHEPHERD NAEA |

MORE DETAILED PROPERTY PARTICULARS
WWW.ESTUARYESTATES.CO.UK

FLOORPLAN FOR GUIDANCE ONLY. NO LIABILITY ACCEPTED FOR ERRORS.